

Alexander Wylie's journey from Chengdu to Hanzhong in 1868; and the road today



古兴州



David Jupp, Feng Suiping, He Jian



刘邦



古兴州

Rough Outline

- ❖ Recap – Shu Roads and 512
- ❖ The push into the Yangtze Basin after 1860 & Western Travellers on Shu Roads
- ❖ June 2012 Field visit to Wylie's Route
- ❖ The Han River Route
- ❖ Conclusions



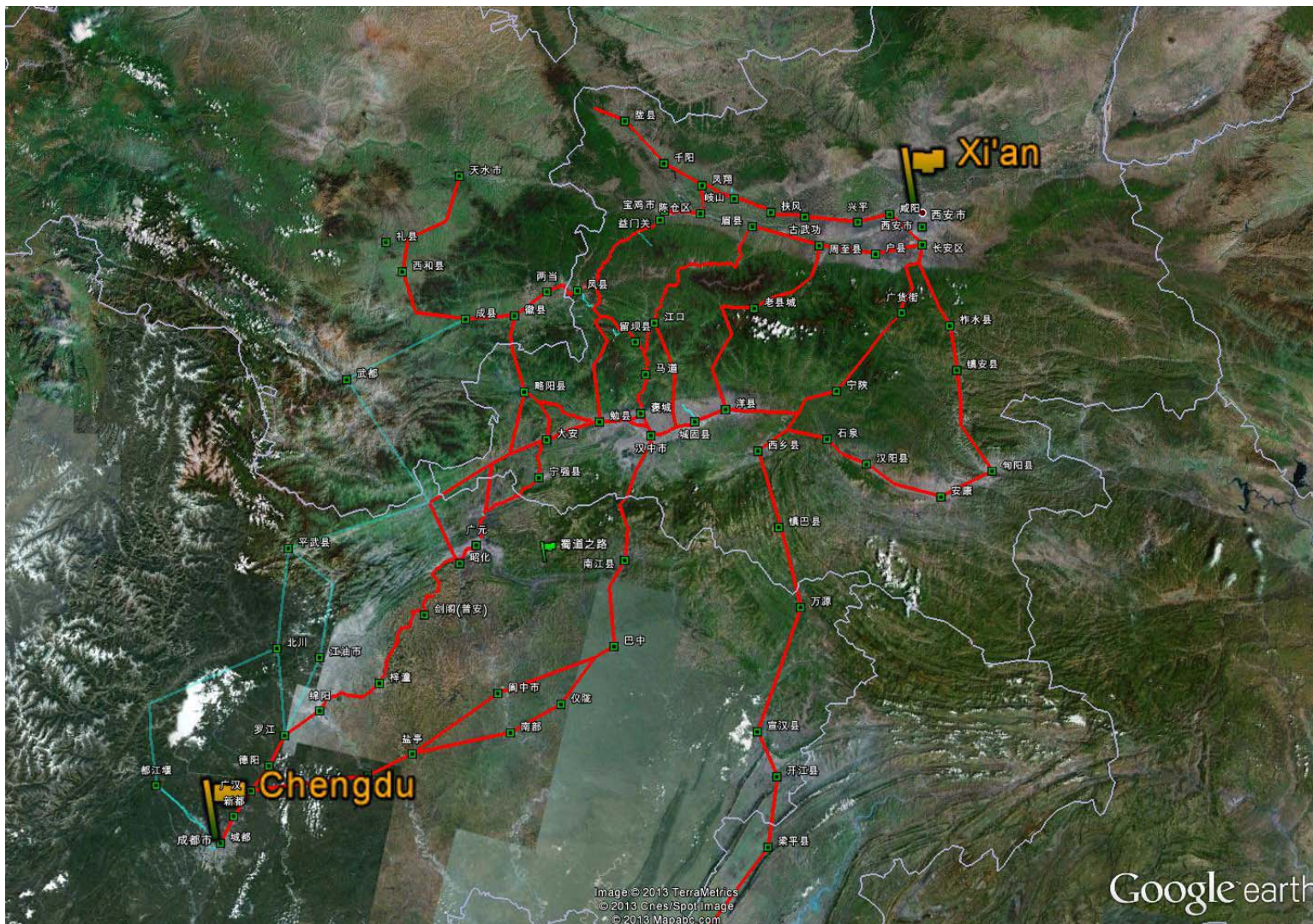
刘邦

The Shu Road Presentation – Present State

蜀道项目



古兴州



刘邦

Fault Lines of the Wenchuan Earthquake

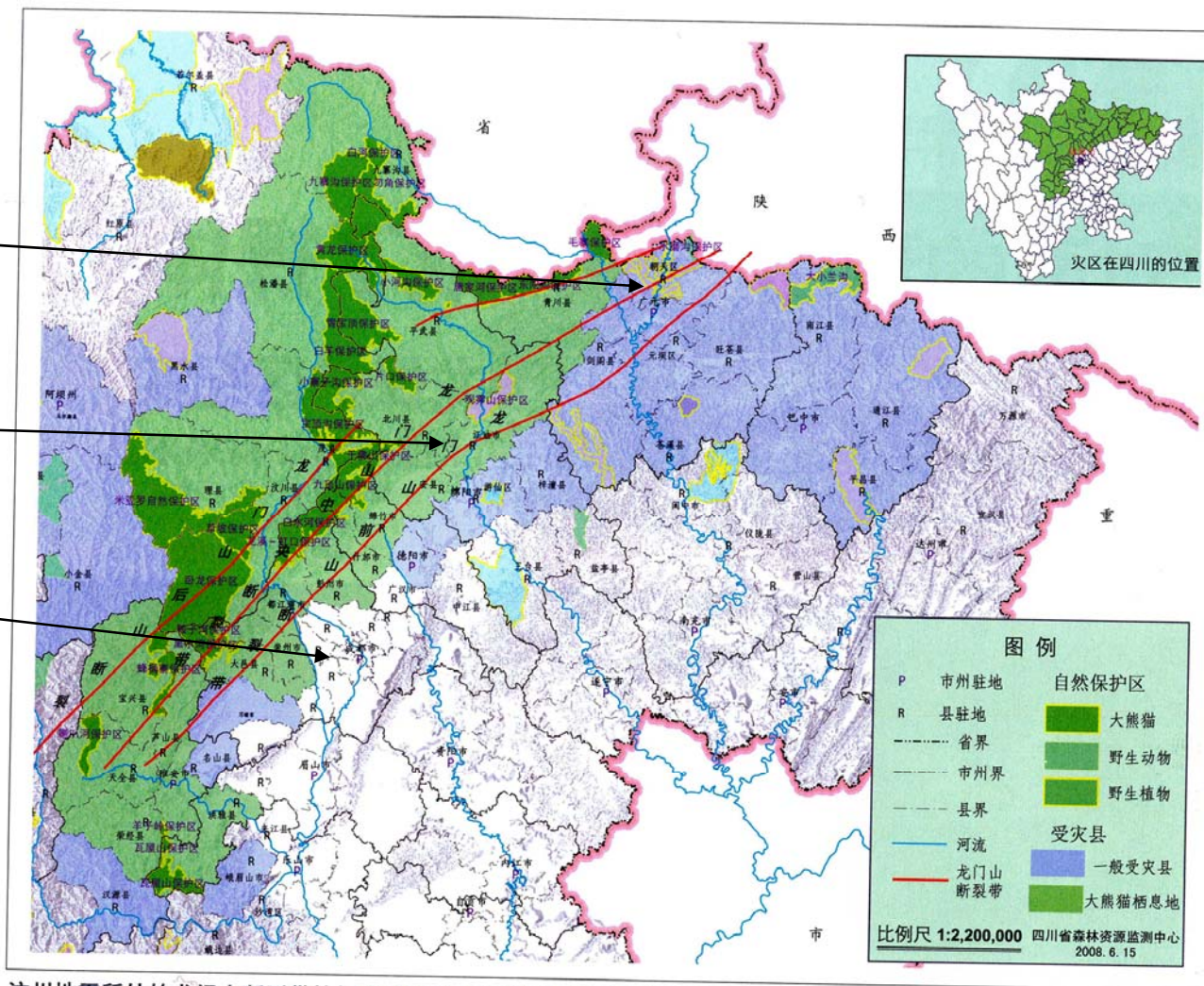


古兴州

Guangyuan

Jiangyou

Chengdu



汶川地震所处的龙门山断裂带恰好穿过四川省自然保护区最为密集的一个区域。



刘邦



古兴州

The great Wenchuan earthquake

蜀道项目



刘邦

Push into the Yangtze Basin (1)



古兴州

- ❖ 1842-1860 Opium Wars & Taiping Tianguo
- ❖ 1860 Treaty of Tianjin concluded:
 - ❖ Ten new treaty ports opened to trade;
 - ❖ Foreign diplomats were to be allowed at Peking;
 - ❖ The opium trade was legalized;
 - ❖ Kowloon surrendered to Britain;
 - ❖ **Permission for foreigners to travel throughout China;**
 - ❖ Large indemnities paid to Great Britain and France.



刘邦

Push into the Yangtze Basin (2)

- ❖ Steamboats and shallow draft Gunboats move up to Hankou and beyond
- ❖ Travellers fan out into China to survey resources and routes for Merchants, Military & Missionaries to travel throughout China:
 - ❖ 1868 Alexander Wylie
 - ❖ 1871 Baron Ferdinand von Richthofen
 - ❖ 1873 M. L' Abbé Armand David
 - ❖ 1874 Col. Sosnovsky
- ❖ All travelled on parts of Shu Roads or the Han River and passed through Hanzhong



古兴州



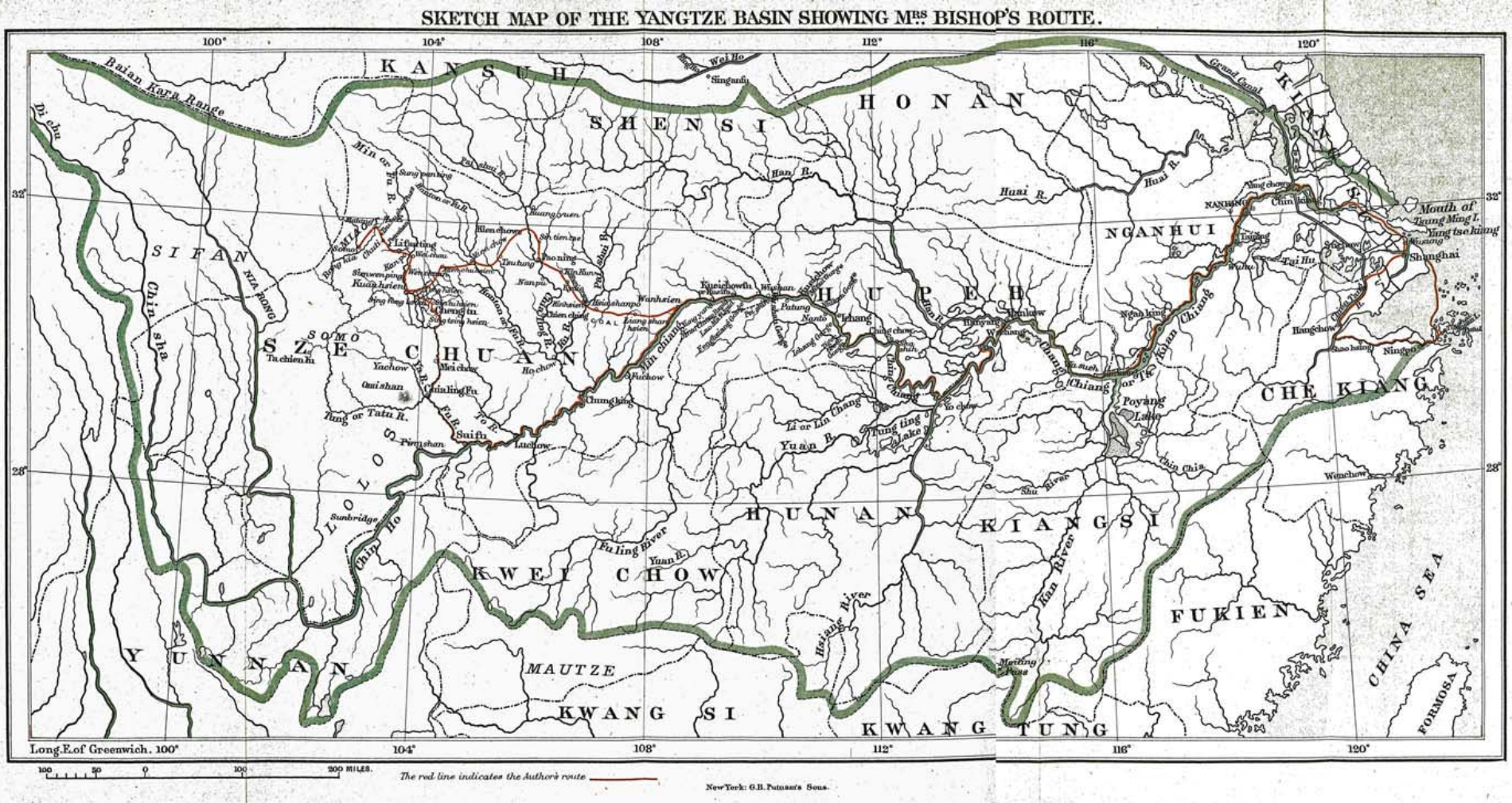
刘邦



Push into the Yangtze Basin (3)

蜀道项目

古兴



刘邦



古兴州

5 days in June 2012

蜀道项目



刘邦



古兴州

Sichuan Sites

蜀道项目

❖ Baima Guan

❖ Jueyuan Temple

❖ Cuiyun Lang

❖ Jianxi Tianxiong

❖ Minyue Xia



刘邦

Hanzhong and the Han River Route



古兴州

- ❖ Wylie arrived at Mianxian and took a boat to Hanzhong. He had reached the upper limits of navigation on the Han River
- ❖ He intended to head down the Han River to Hankou but it was raining heavily and Chinese convinced him to first go to Shiquan and then by boat.
- ❖ Between Yangxian and Shiquan there were dangerous rocks and rapids.
- ❖ His overland route was via Xixiang where we visited in June 2012 – as well as the site of a Catholic Mission from 1880 to 1935 called Guluba



刘邦

Han River Route



古兴州

- ❖ The Han River Route became a major pathway to get into the west of China (and out of it) from the secure port of Hankou
- ❖ Chinese say “above Yangxian and below Jun Zhou, the shoals are shifting sand; between Yangxian and Junzhou the shoals are all rocks”
- ❖ Teichman (1917) as usual was succinct:
- ❖ “The Han River is of course the main artery of communication. To Hankow downstream takes one to three weeks according to the state of the water, and the return journey upstream one to two months. Steam navigation on the upper Han seems to be out of the question owing to the shallows, shifting channels, and rapids. The worst rapids, some of which are very dangerous, lie between Yang Hsien (at the lower end of the Hanchung plain) and Hsingan (Ankang)”.



刘邦

Travellers accidents on the Han River



古兴州



- ❖ Wylie (1868) Avoided Mianyang rapids but boat damaged after Shiquan with large waves near Ziyang;
- ❖ David (1873) Sailed through to Shiquan but wrecked past Ziyang (survived but specimens lost);
- ❖ Piatssevsky (1874) wrecked between Shiquan and Mianyang.
- ❖ Despite these experiences, Missionaries flowed into Hanzhong via the Han River until the 1930's when it was cut off by war.



刘邦

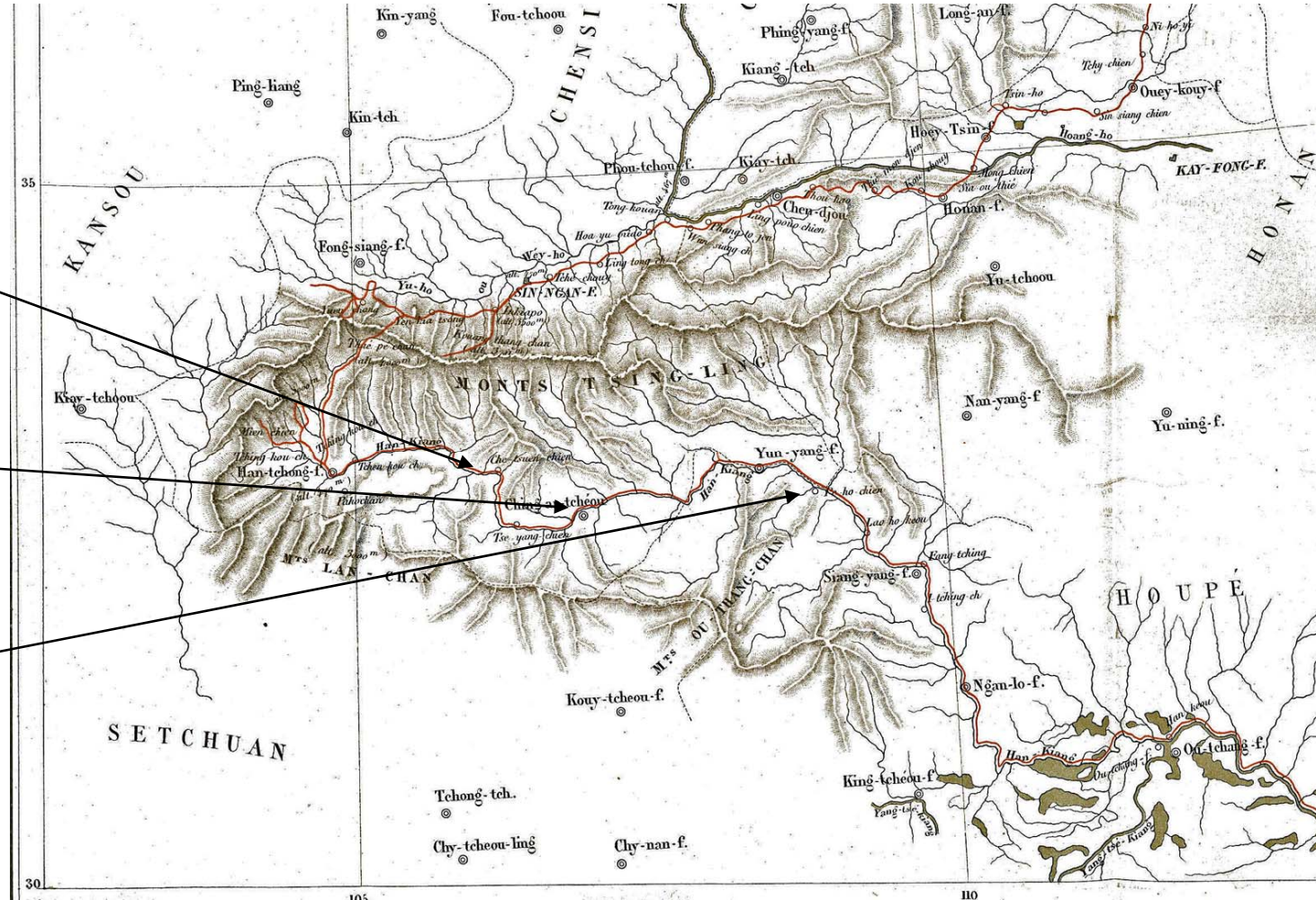


古兴州

Out to Hankou – Fr. Armand David's map

蜀道项目

Shiquan Dam
Ankang Dam
Danjiang Dam



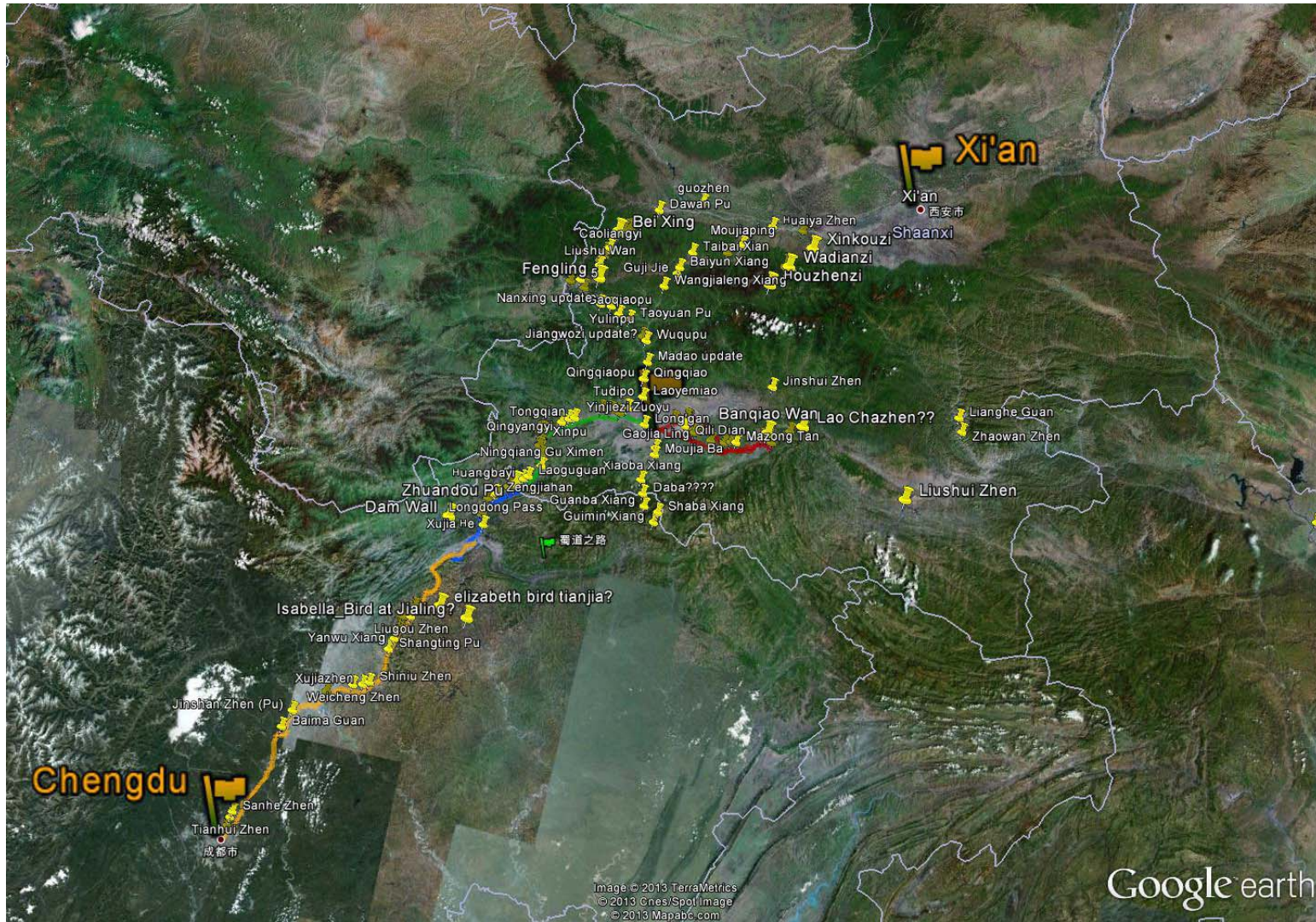
刘邦



古兴州

Backlog - Work Waiting to Complete!

蜀道项目



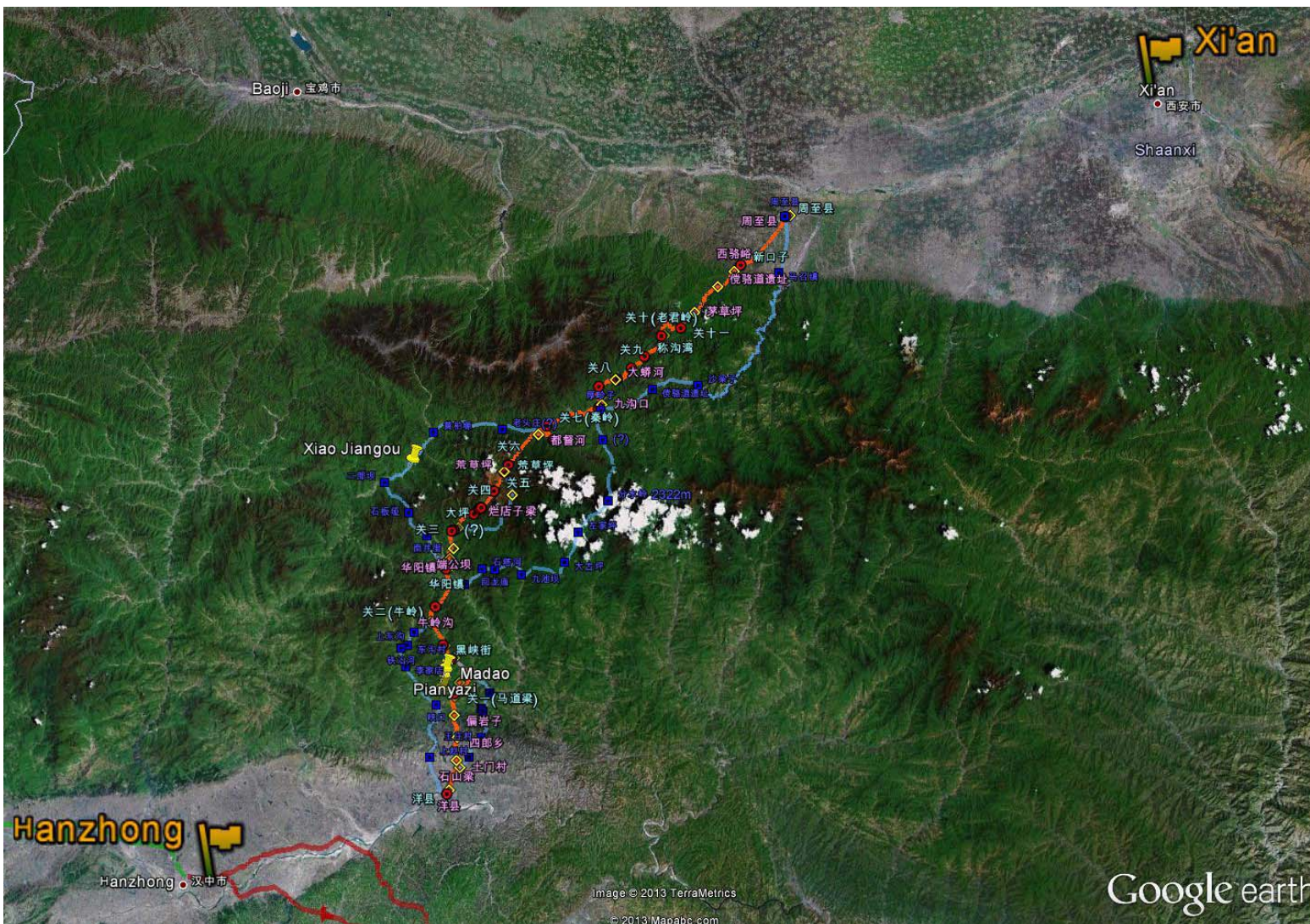
刘邦

Next route to reach the web (in progress)

蜀道项目



古兴州



刘邦



古兴州

TangLuo Road mapping is helped using Russian Military Maps in Google Earth

蜀道项目



刘邦

Conclusions



古兴州

- ❖ Documents and backing material is all available at the web site:
- ❖ <http://www.qinshuroads.org/>
- ❖ Alternatively – just search on “Shu Roads” with Google...
- ❖ Wylie’s voyages involved many interesting activities – such as deciphering his transliterations!
- ❖ I hope (soon?) to complete the studies of the geography of the travels of the early “explorers” and have it all there to see
- ❖ Thank you for listening!



刘邦