

Figures for Data Set

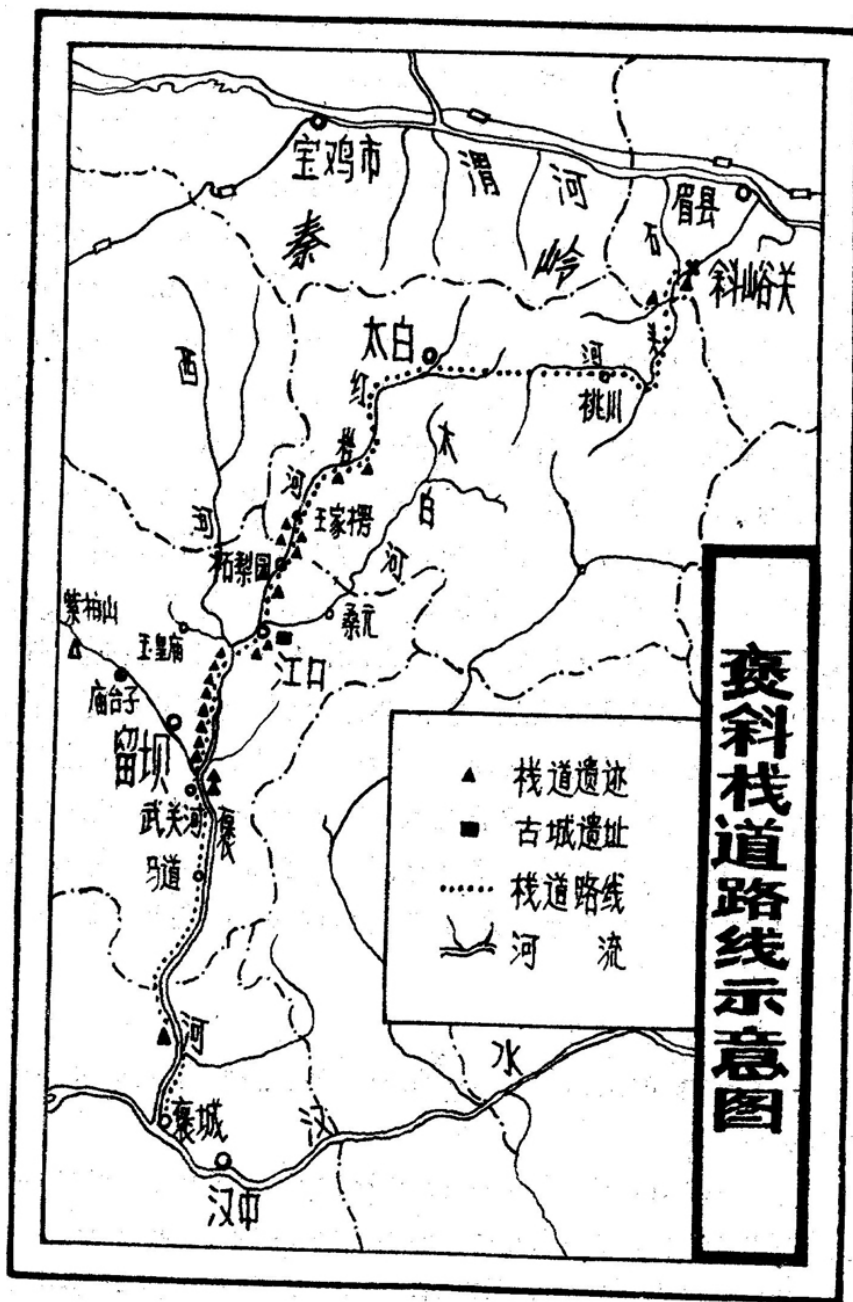


Figure 1. Map of Relics on Baoxie Road from 陈泽孝, 陈宁 (1999) "张良庙与紫柏山", 留坝县张良庙文管所

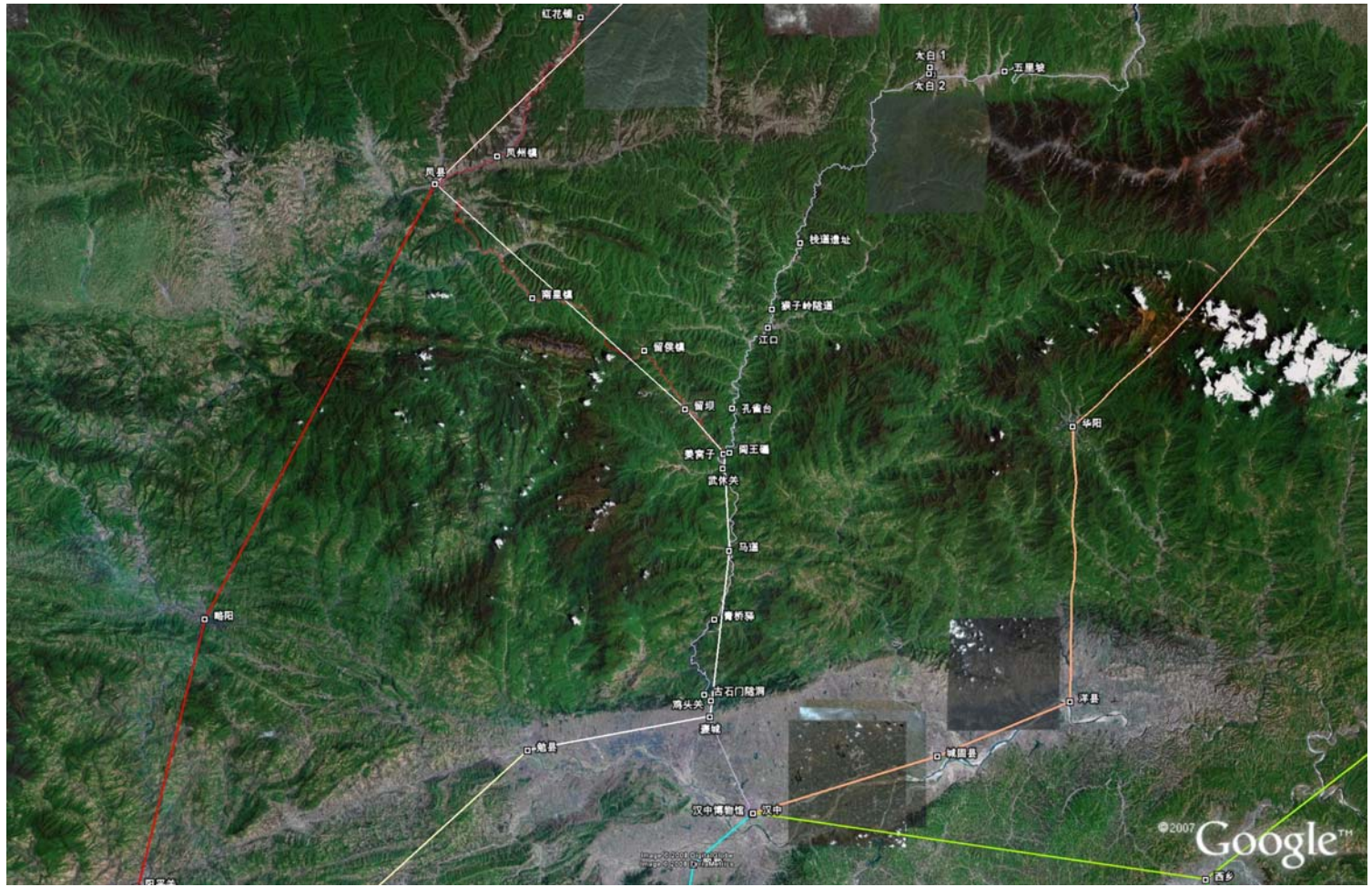


Figure 2: Places, Routes and Tracks in the current Shu Roads collection displayed in Google Earth Study area is in the middle. Place names include relic sites and towns. Hanzhong is in the lower middle area.

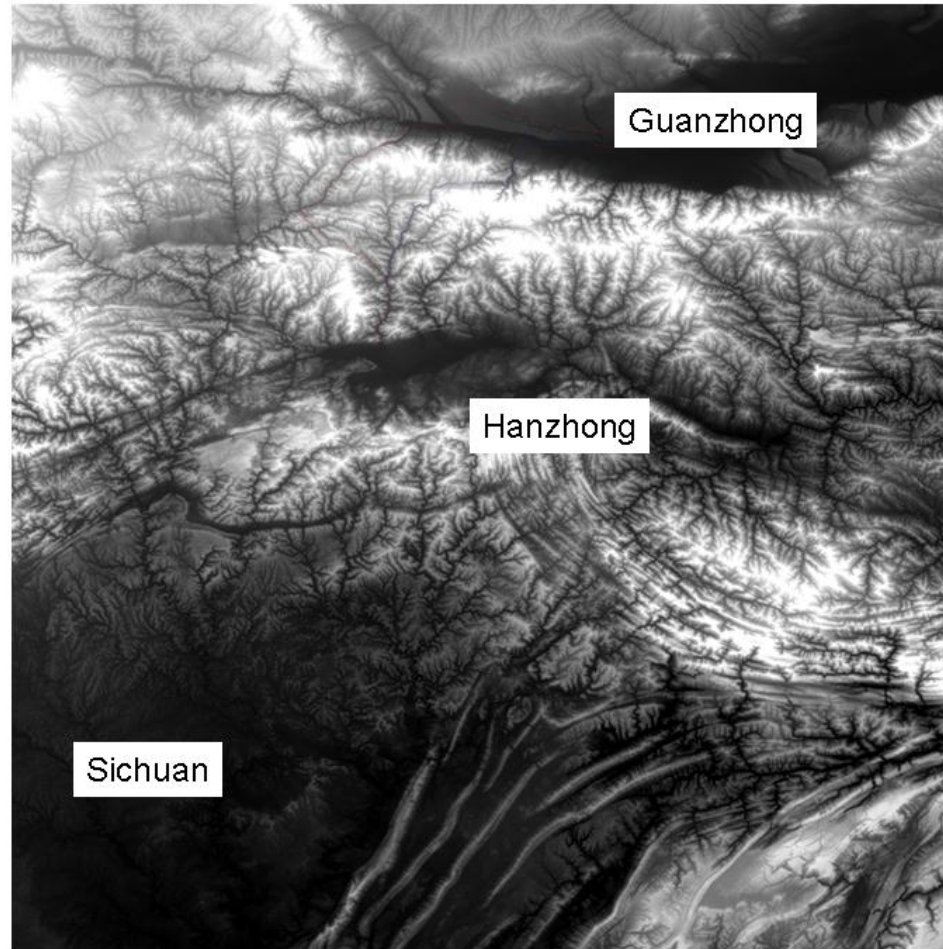


Figure 3: Extent of the QinBa Mosaic Shu Road image based on 1 degree SRTM tiles.

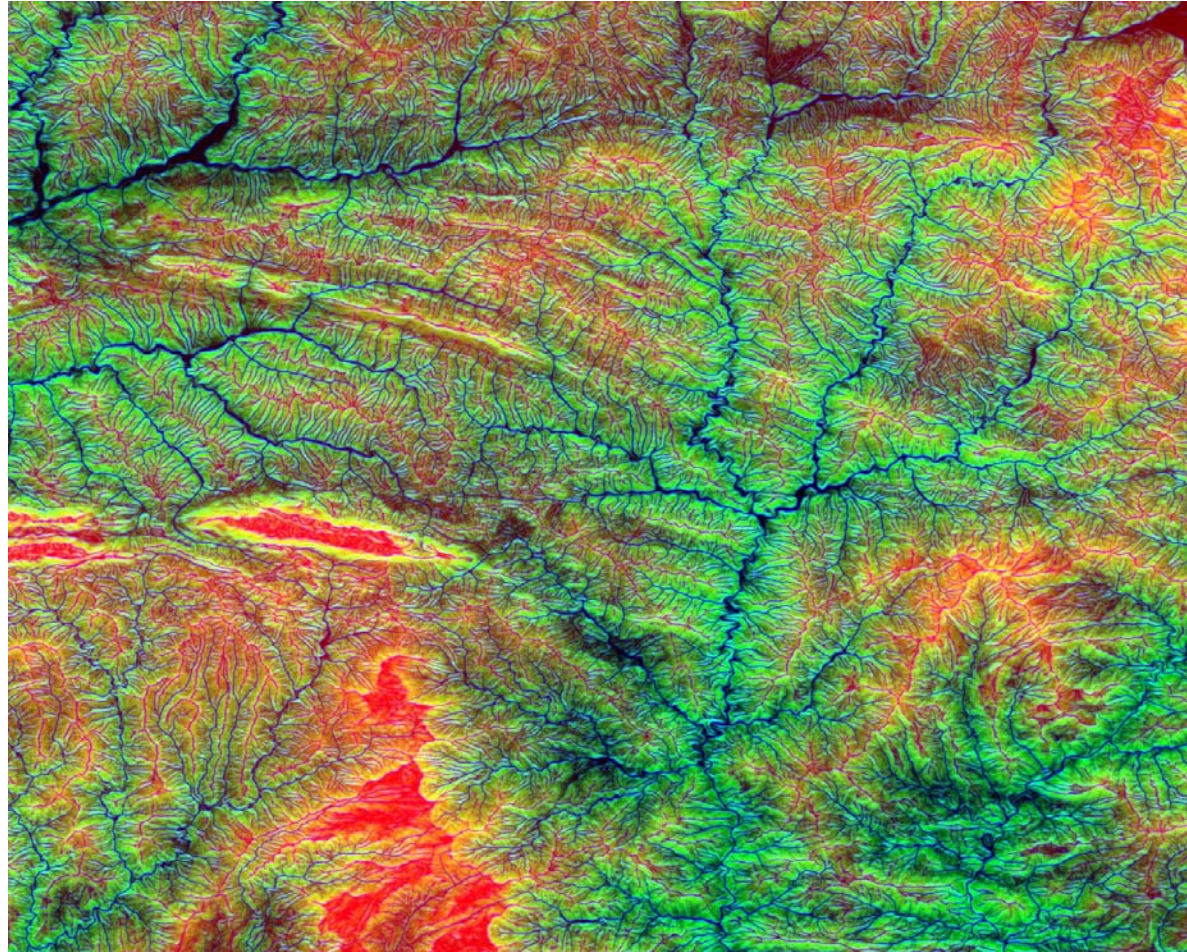


Figure 4: “Baoji” Subset with SRTM heights, slope and curvature to create terrain enhancements and map terrain features. Contains new study area to right of centre.



Figure 5: Basic place list defining the extent of the new study area. Zibai Mountain is in the top left. Houziling relic site is in the top right. Madao is in the lower middle.

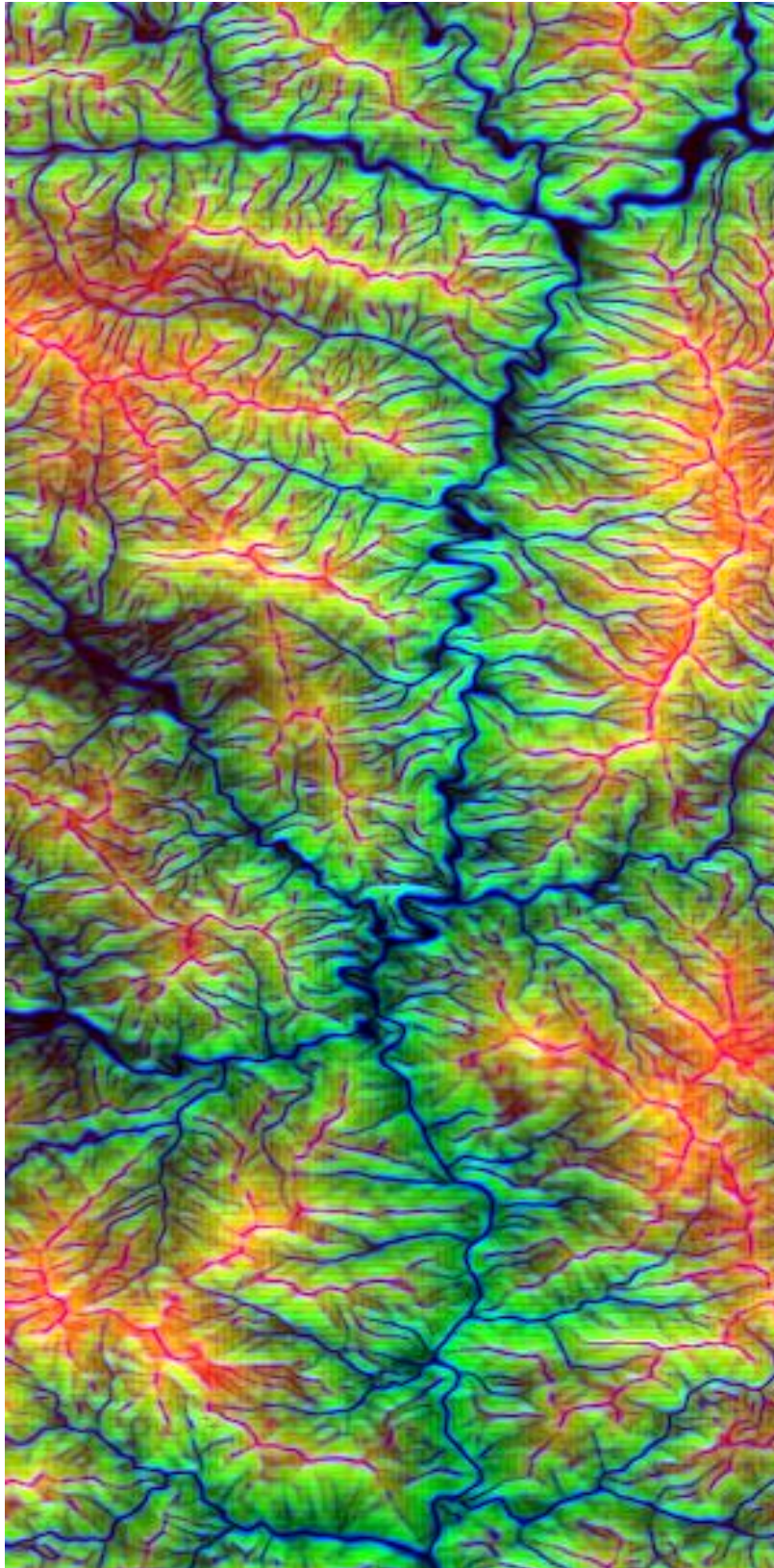


Figure 6: New study area subset from the Baoji Test Image. The colours are also Height, Slope and Curvature. Data are floating point. Heights can be extracted and converted to integer if needed.

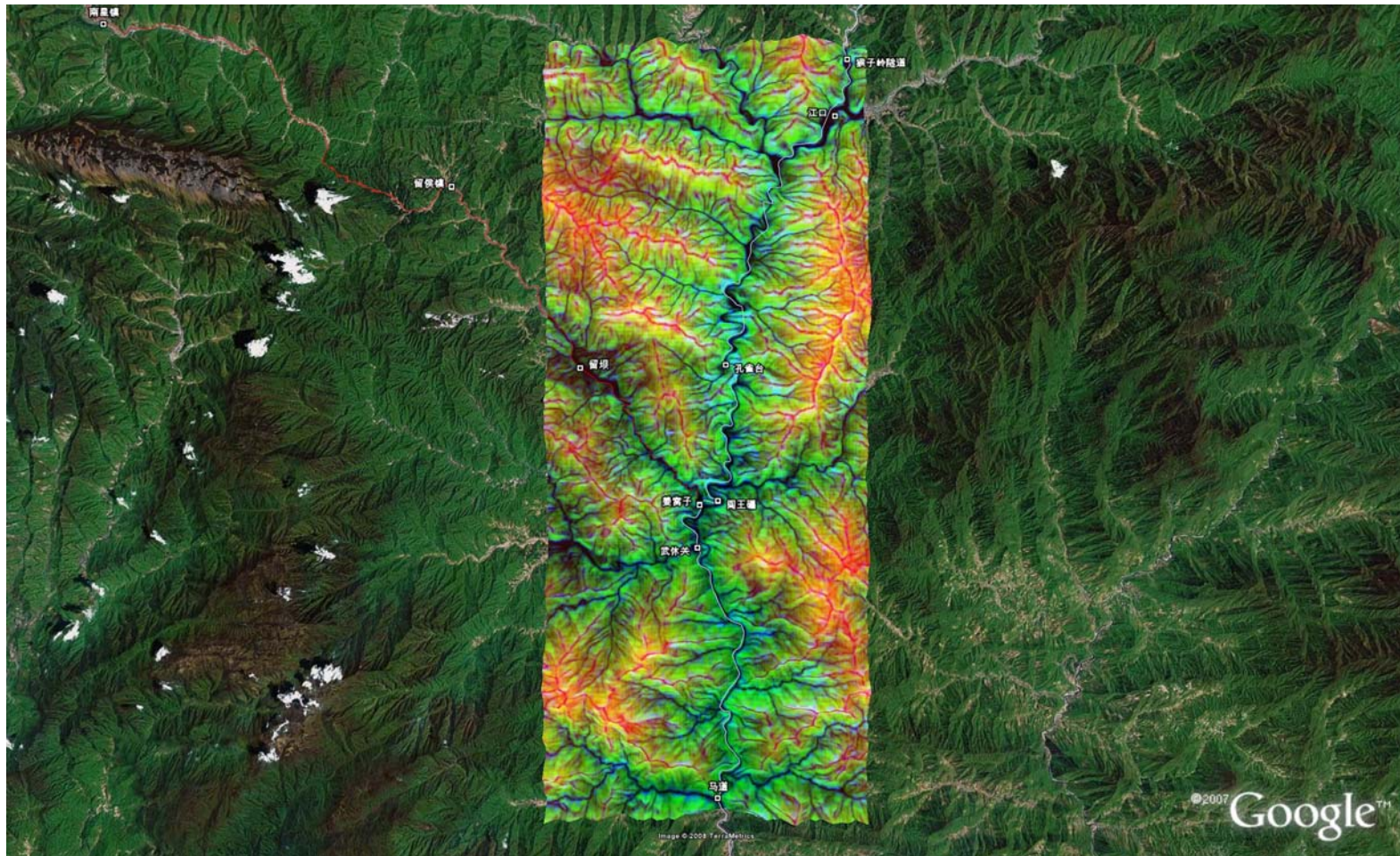


Figure 7: Tiff file of new study area image (byte file) overlaid in Google Earth showing extent and conformity.

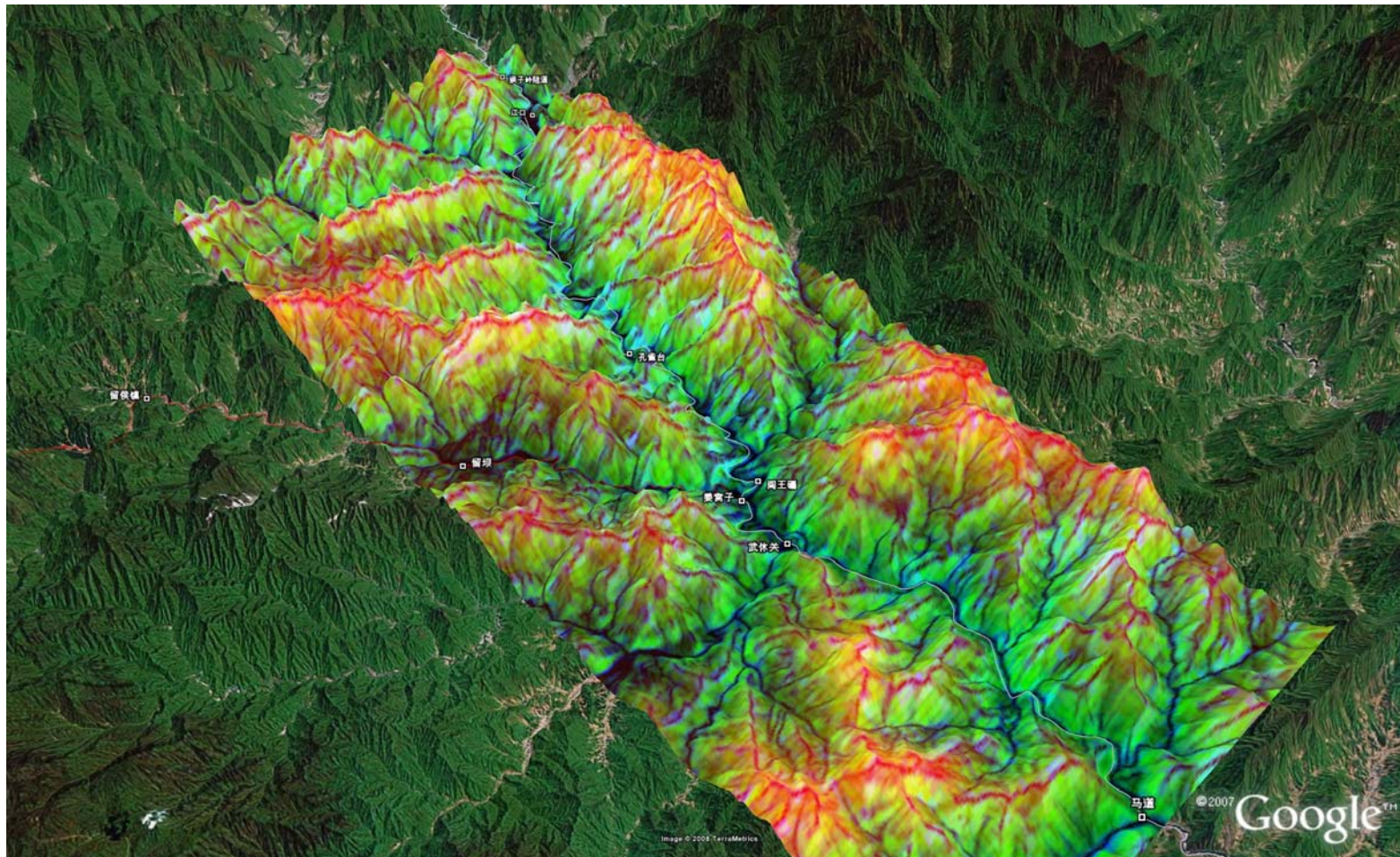


Figure 8: Google Earth image rotated and tipped to show relief effects. Otherwise same as Figure 7.

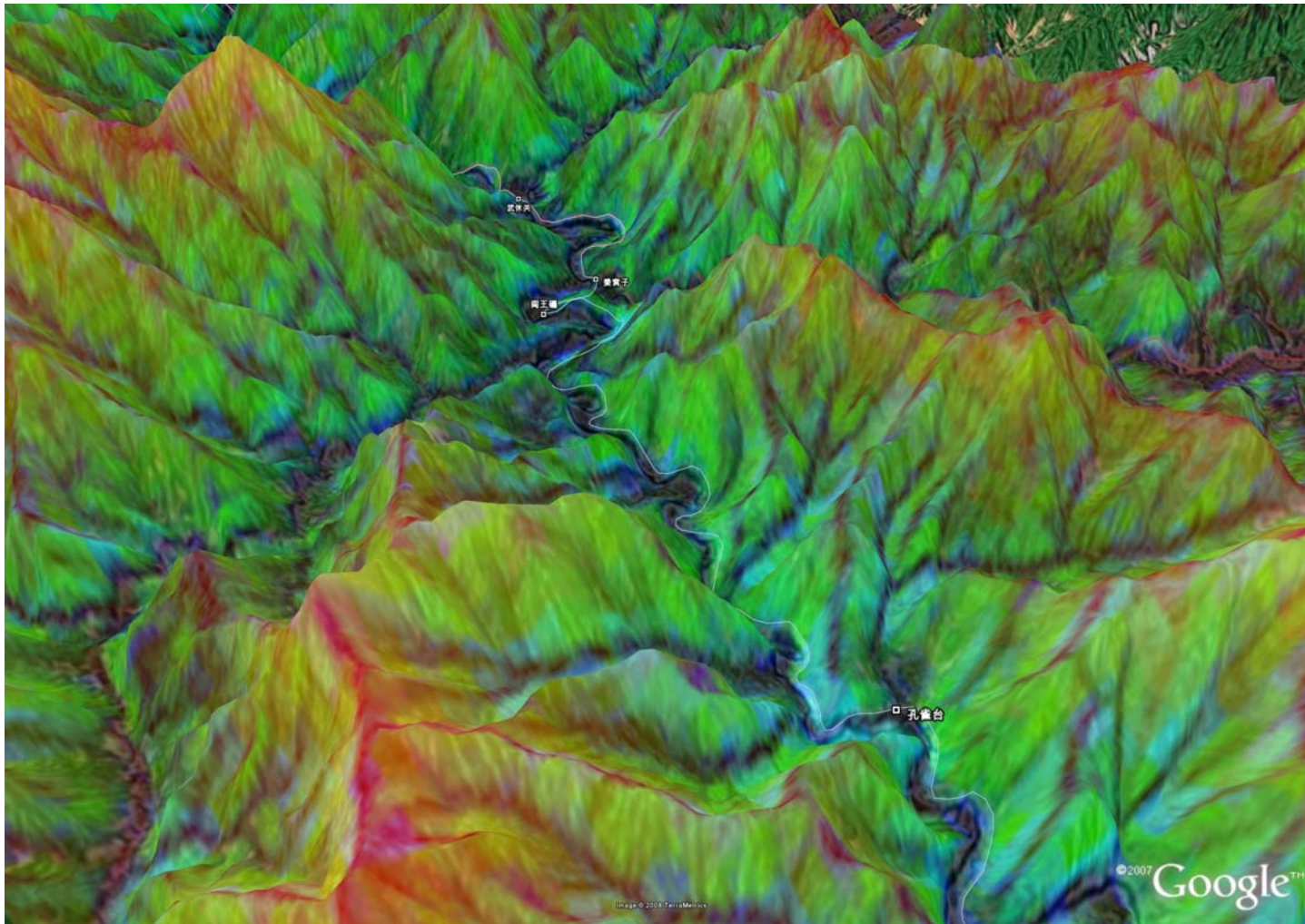


Figure 9: Zoom of Figure 8 to show detail at the finer scale. Pixels are 90m.

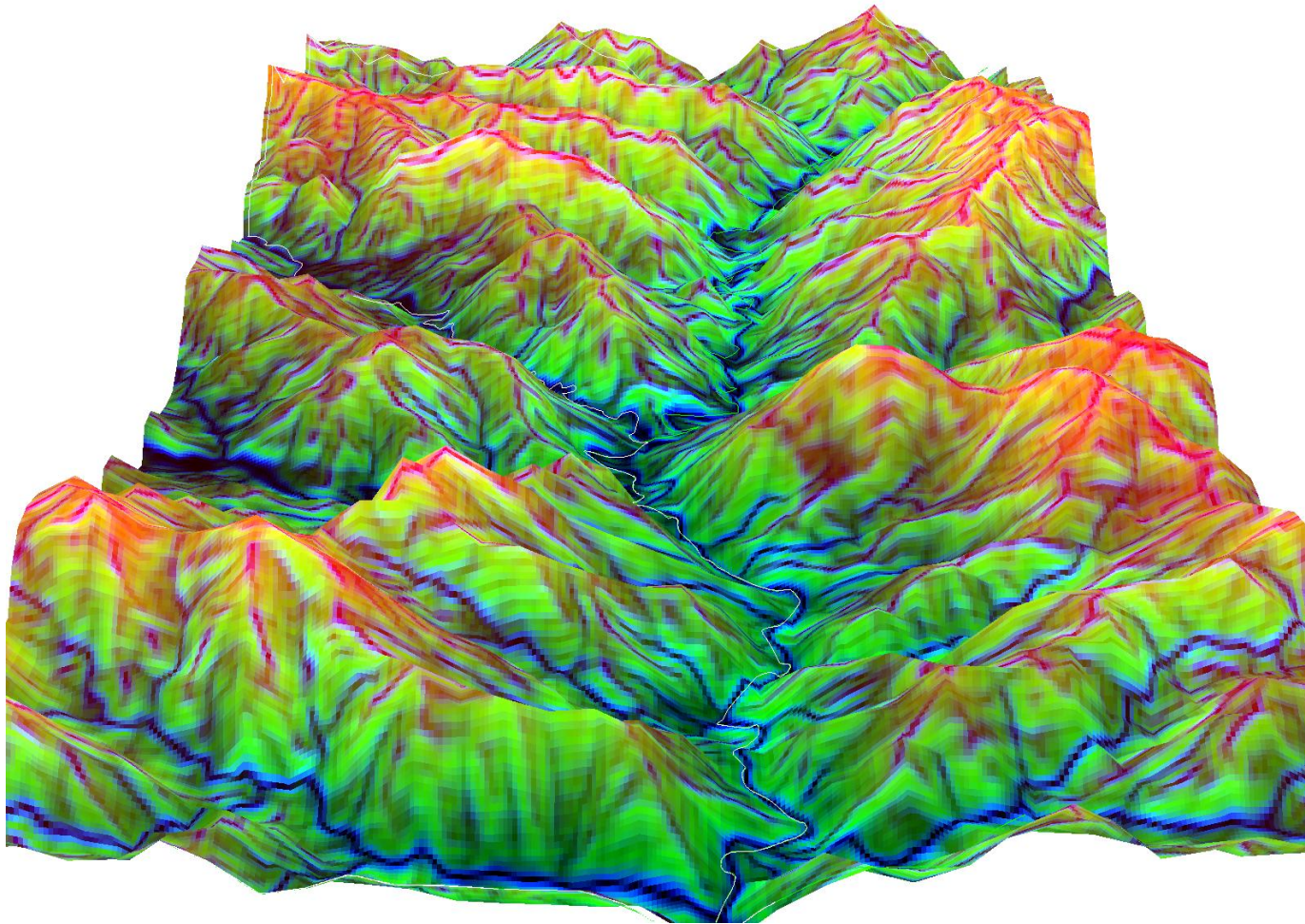


Figure 10: New study area data displayed in ENVI/IDL software. The final DEM will need to be at a finer resolution and be downscaled to include more curvature information as well.

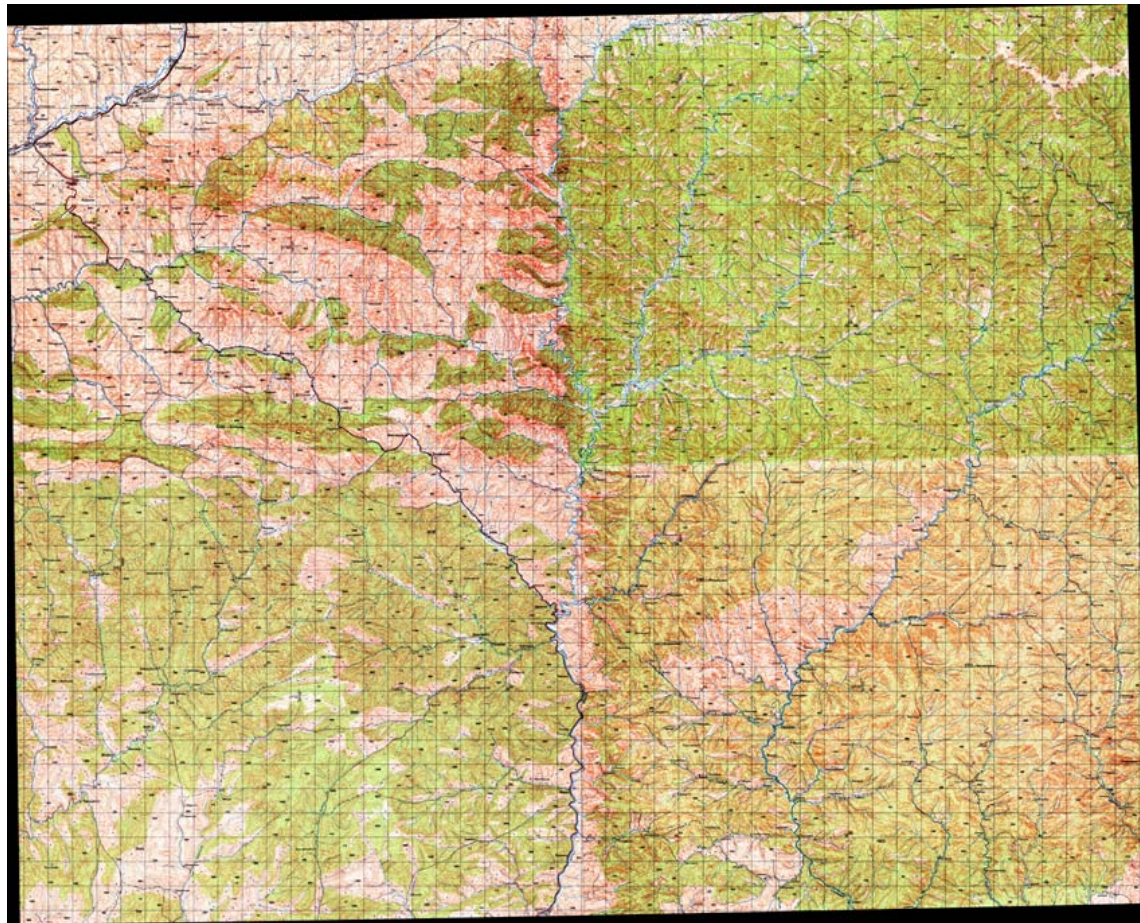


Figure 11: Mosaic of four 1:100k Map Sheets. The new study area is in the corner of the four map sheets for both 1:100k and 1:200k scale map series. The 1:200k map series has added annotation and information which will be useful.

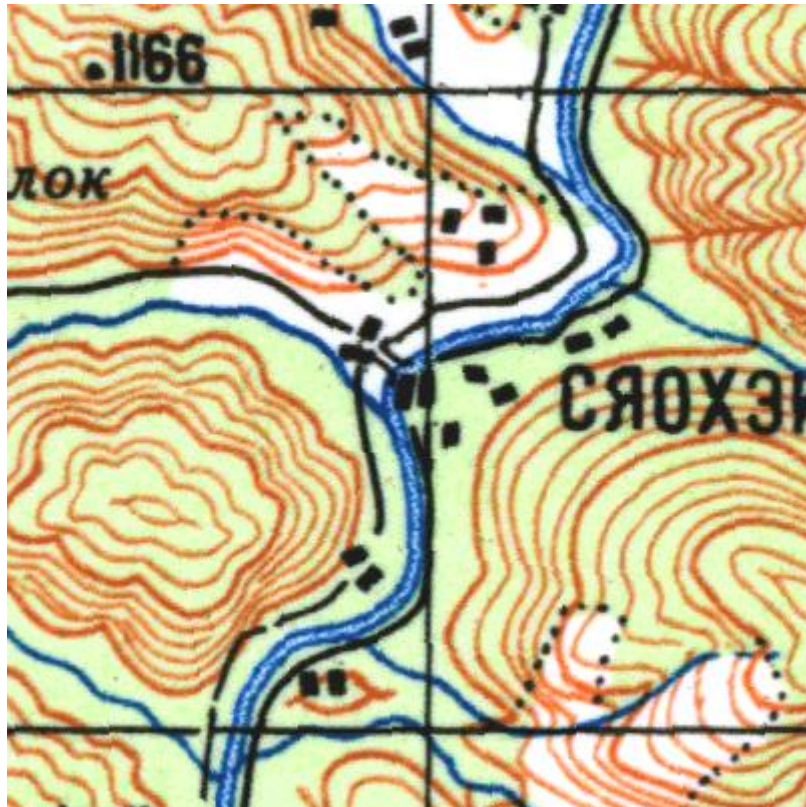


Figure 12: Full resolution section of a 1:100k map. There is a very good separation of the 20m contours possibly allowing a 10m pixel DEM to be constructed. Stream lines can be used to enforce drainage. Roads are closer to the historical roads than present roads and highways.